



## High-level Organisation Charts

**These are high-level organisation charts outlining portfolio areas and key reporting relationships created in response to feedback provided in the 2023 Valuing Voices All Staff Survey.**

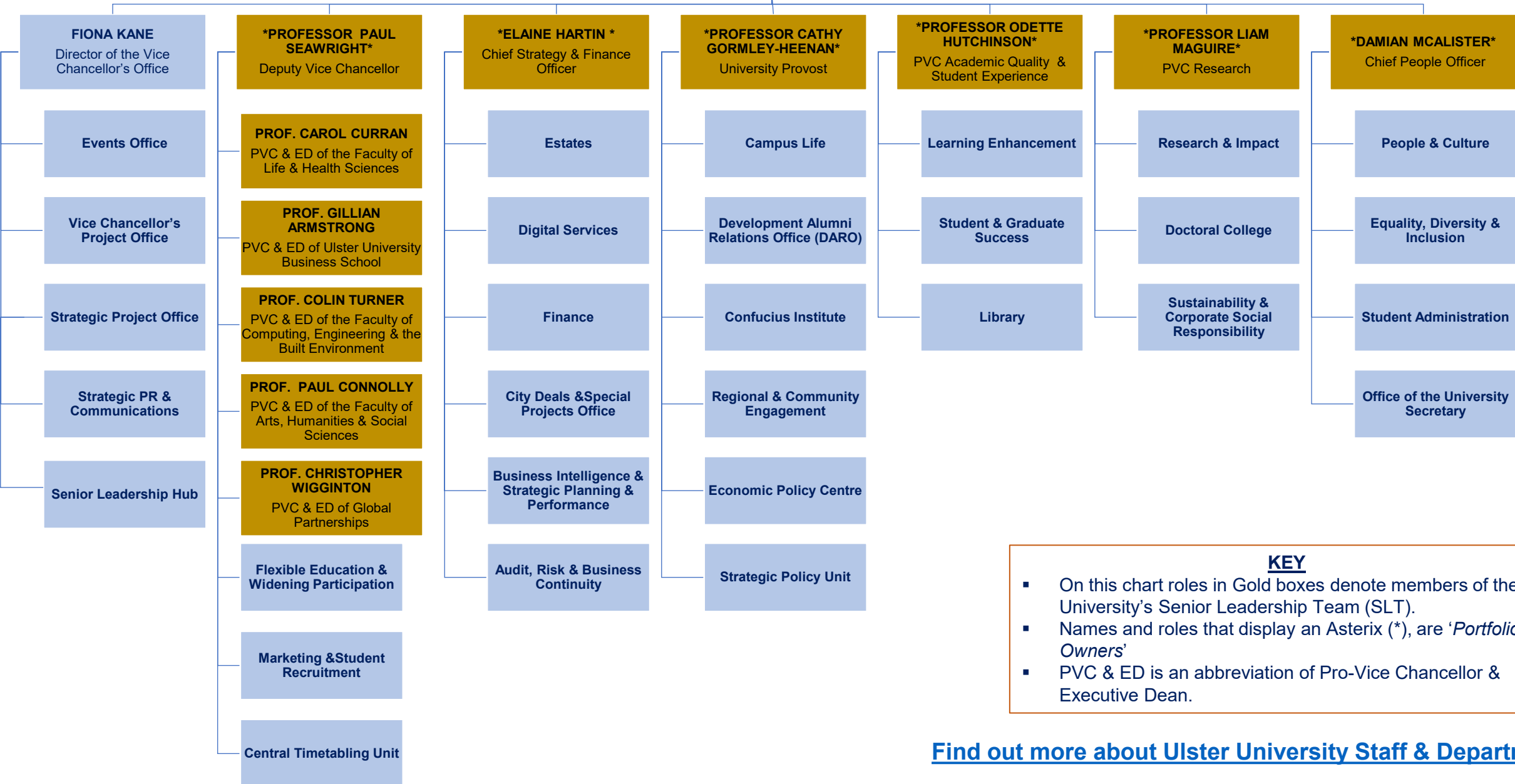
### **Created by**

- Chief People Officer Portfolio
- January 2025

Please contact Nicola Clugston [n.Clugston@ulster.ac.uk](mailto:n.Clugston@ulster.ac.uk) or Alex Peden [a.peden@ulster.ac.uk](mailto:a.peden@ulster.ac.uk) if changes are required. These requests will be reviewed and updates published on a monthly basis.

# Senior Leadership Team Structure

**\*PROFESSOR PAUL BARTHOLOMEW\***  
Vice Chancellor

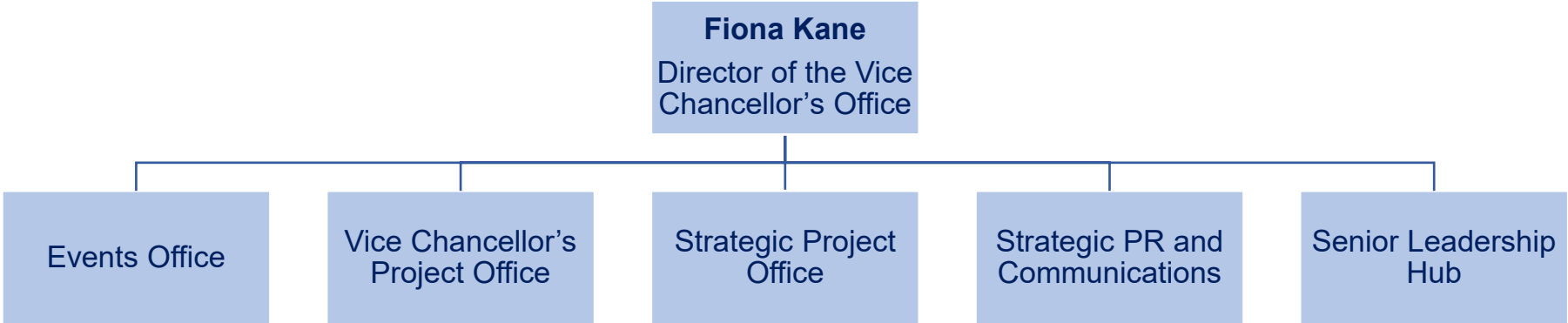


**KEY**

- On this chart roles in Gold boxes denote members of the University's Senior Leadership Team (SLT).
- Names and roles that display an Asterisk (\*), are 'Portfolio Owners'
- PVC & ED is an abbreviation of Pro-Vice Chancellor & Executive Dean.

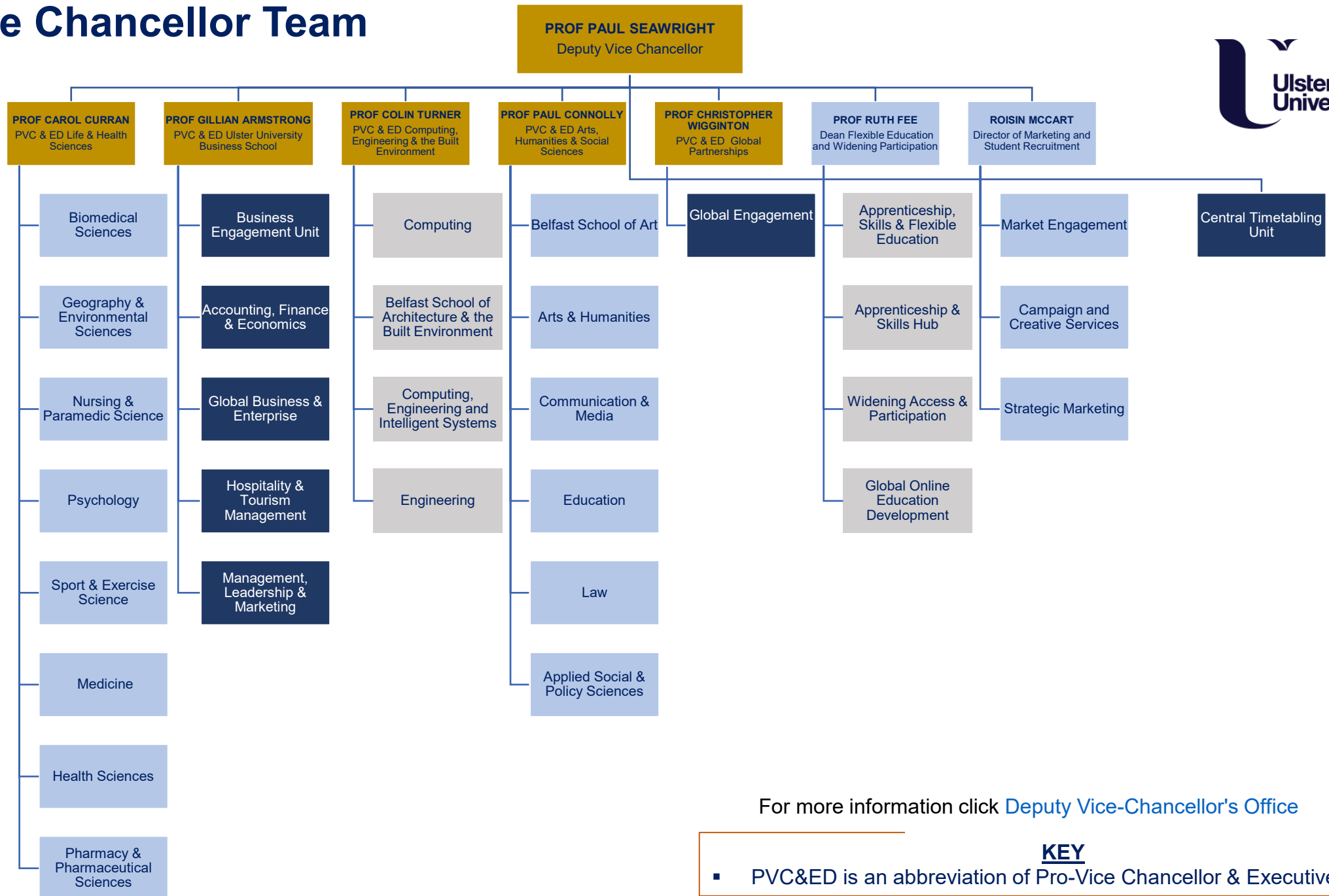
[Find out more about Ulster University Staff & Departments](#)

# Vice Chancellor's Office Team Structure



For more information click [Vice-Chancellor's Office](#)

# Deputy Vice Chancellor Team Structure

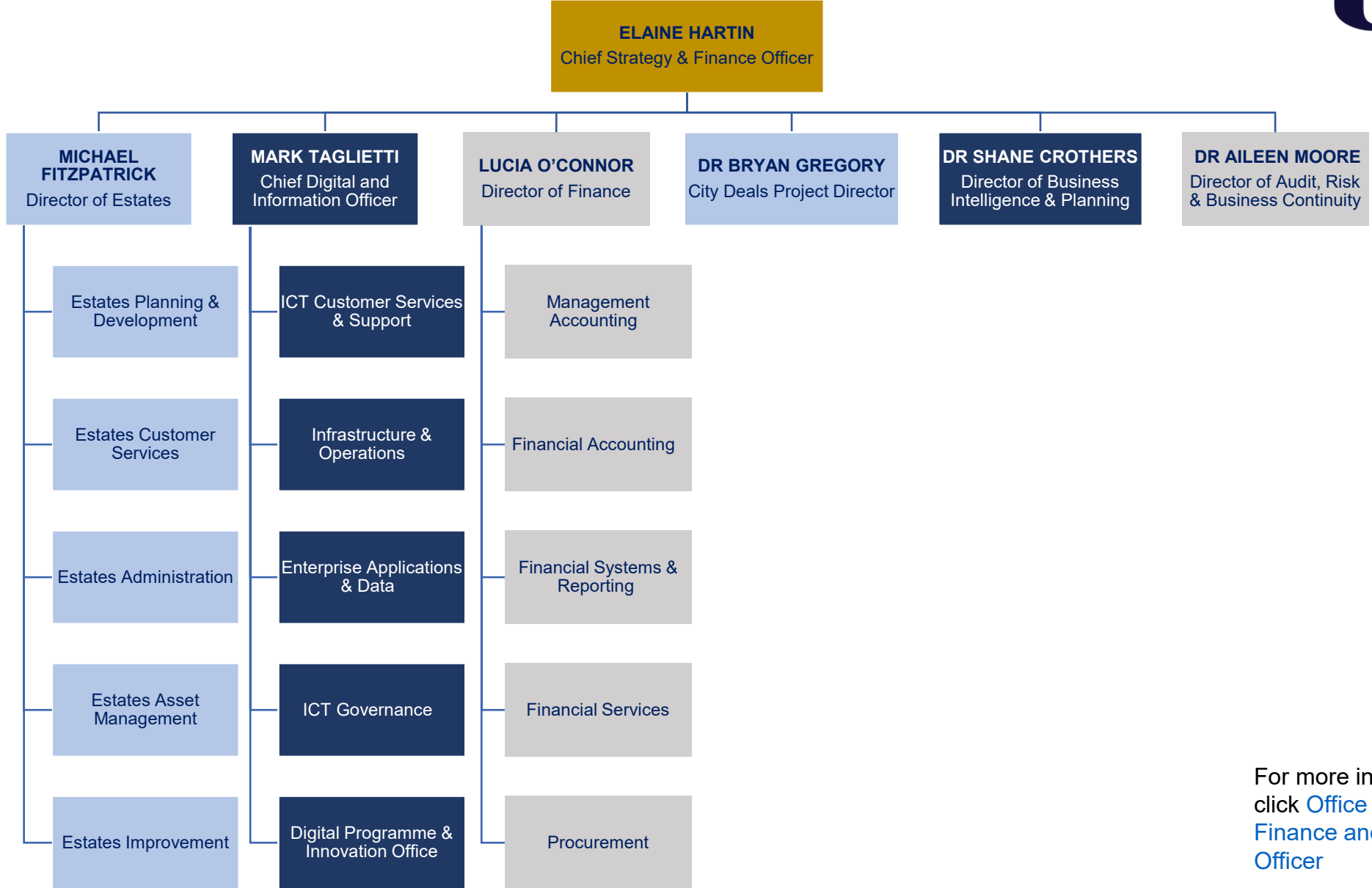


For more information click [Deputy Vice-Chancellor's Office](#)

**KEY**

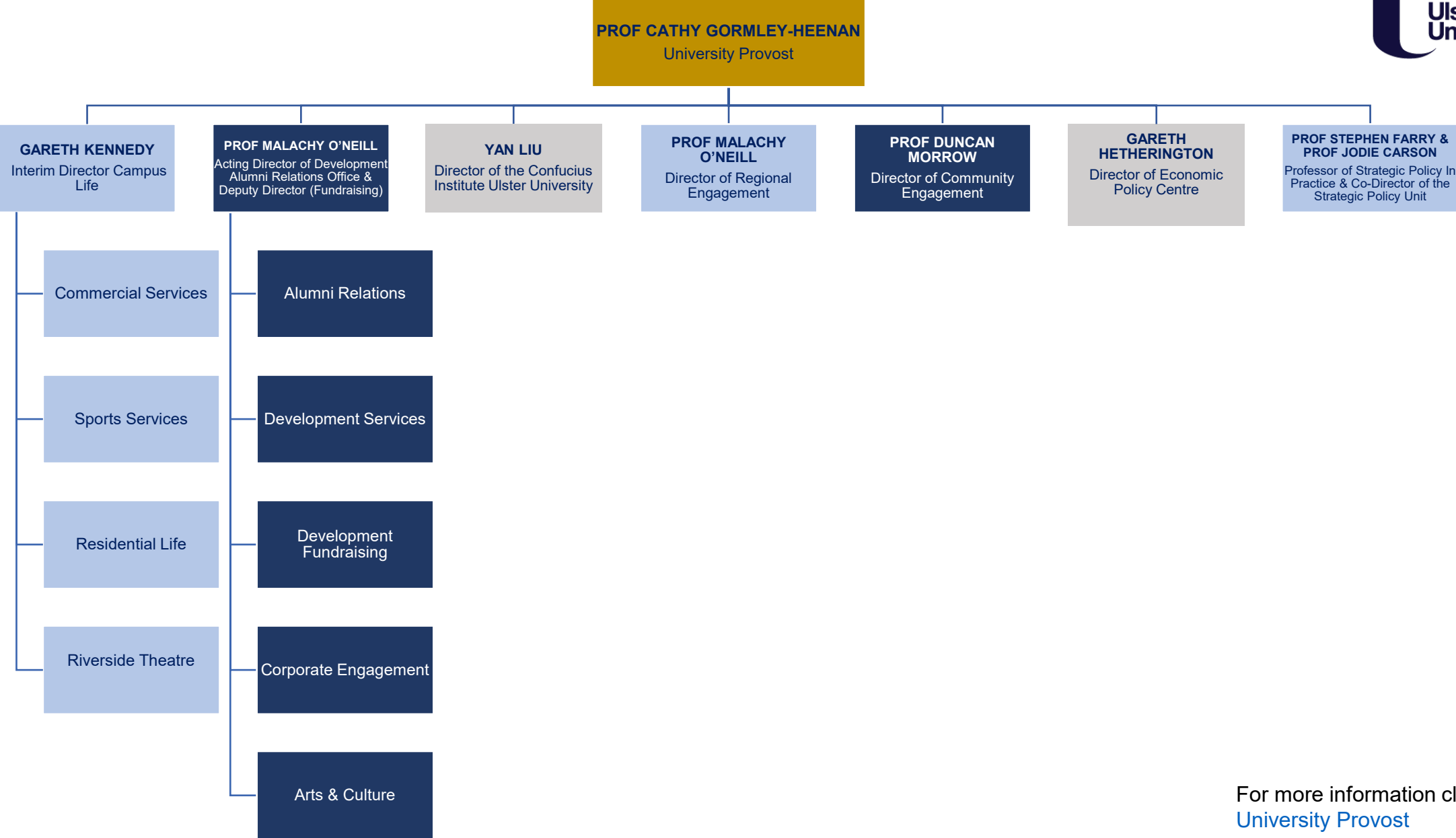
- PVC&ED is an abbreviation of Pro-Vice Chancellor & Executive Dean.

# Chief Strategy & Finance Officer Team Structure



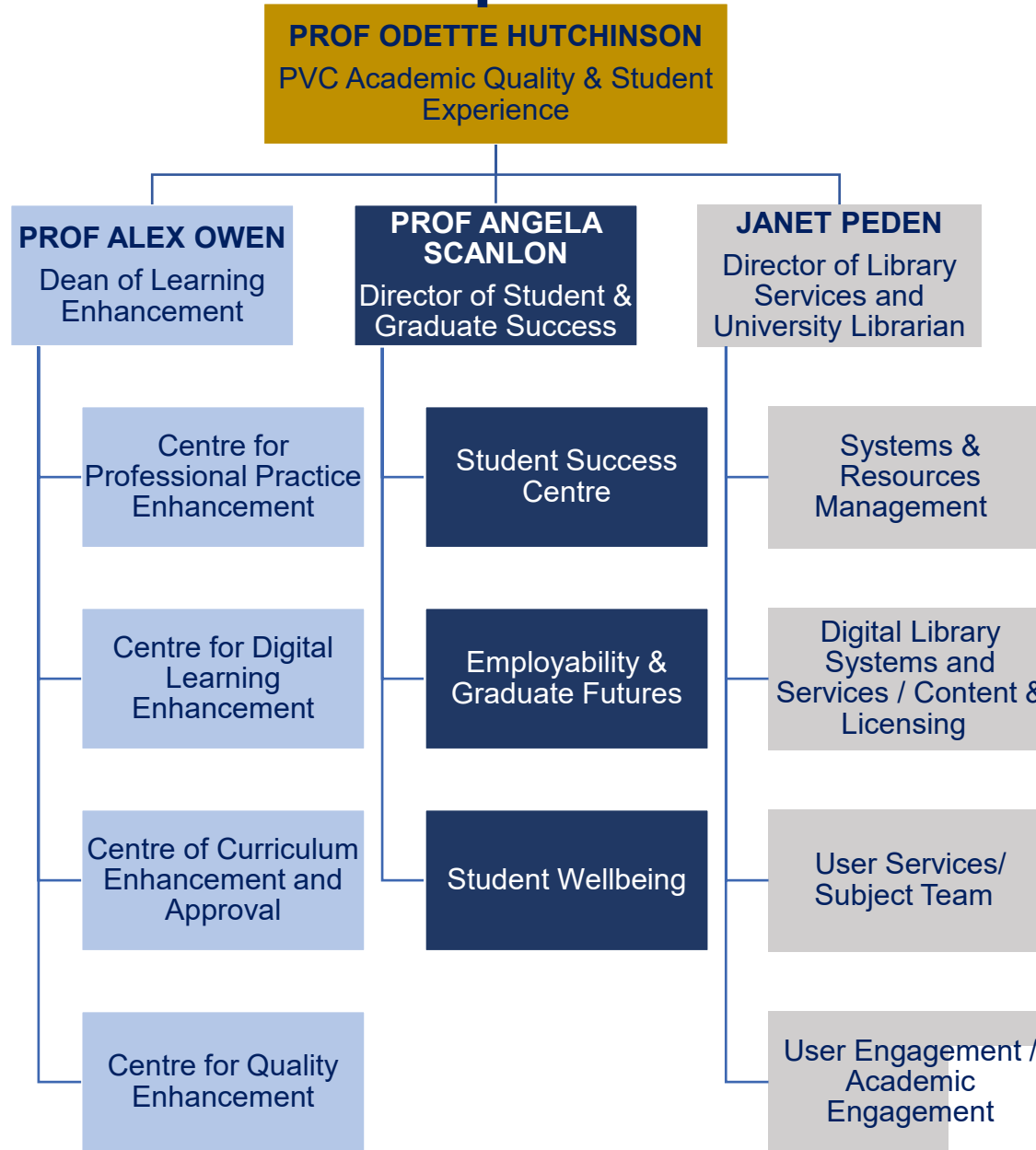
For more information  
click [Office of the Chief  
Finance and Strategy  
Officer](#)

# University Provost Team Structure



For more information click [University Provost](#)

# Academic Quality & Student Experience Team Structure

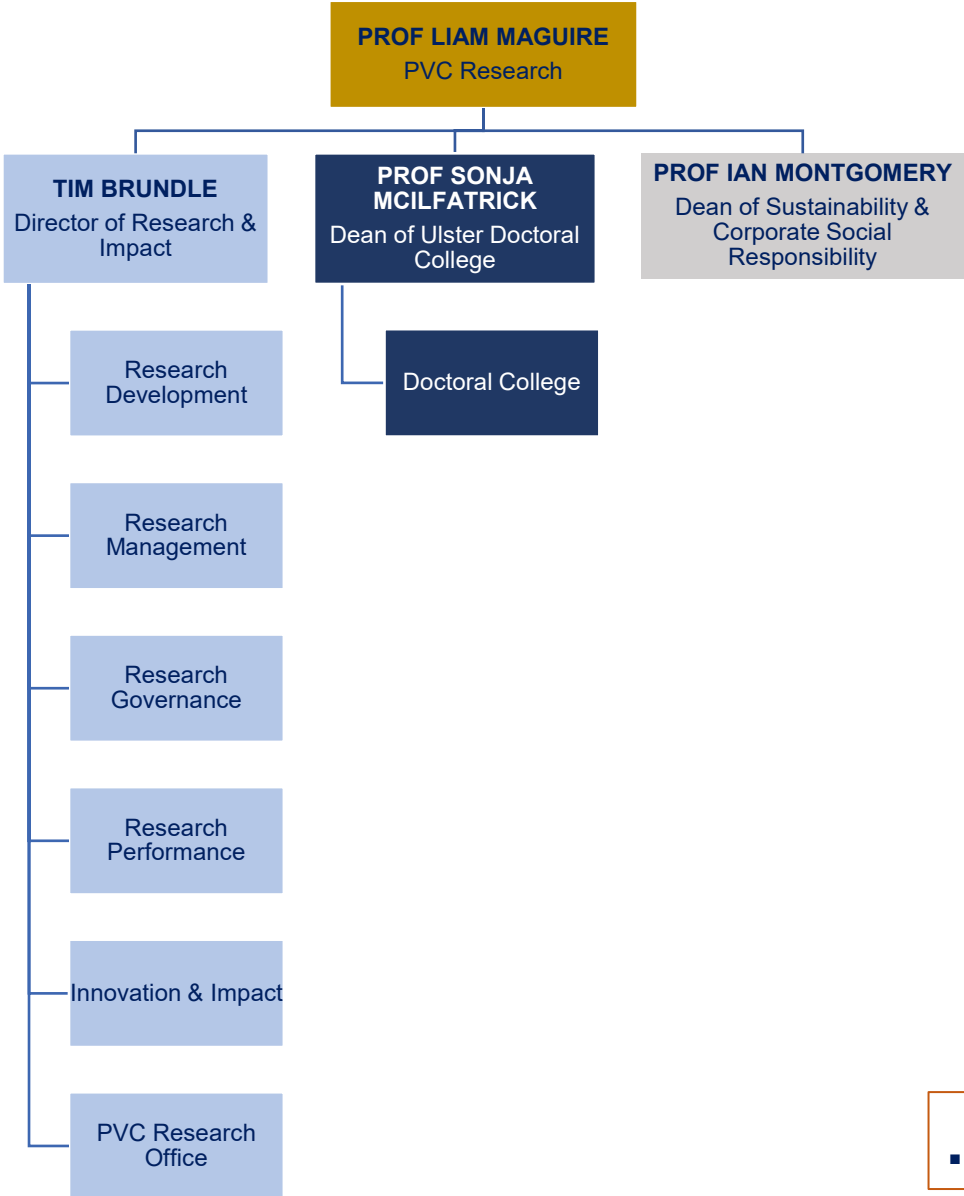


For more information click [PVC Academic Quality & Student Experience](#)

## KEY

- PVC is an abbreviation of Pro-Vice Chancellor

# Research Team Structure



For more information click [Research and Innovation](#)

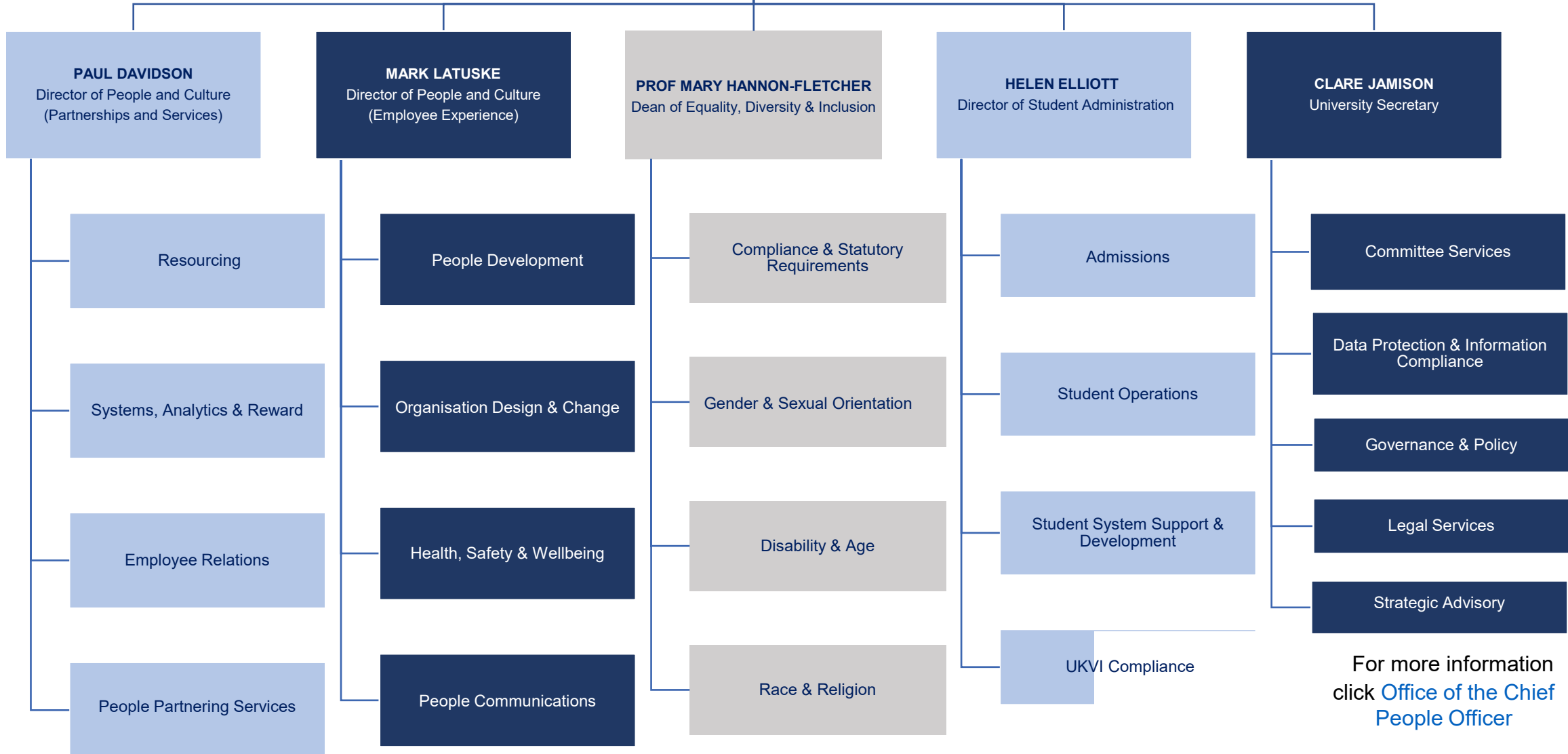
- KEY**
- PVC is an abbreviation of Pro-Vice Chancellor



# Chief People Officer Team Structure



**DAMIAN MCALISTER**  
Chief People Officer



For more information  
click [Office of the Chief  
People Officer](#)